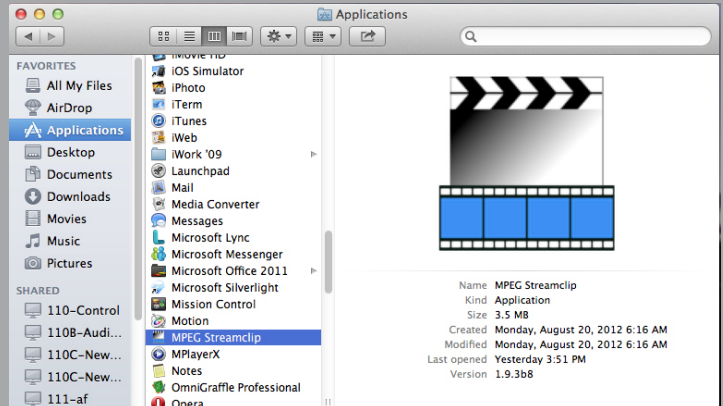


MPEG STREAMCLIP: EXPORTING FOR SWITCHER

Use MPEG Streamclip to change video settings to work with Broadcast Pix.

ONE

Open MPEG Streamclip.
Applications > MPEG Streamclip

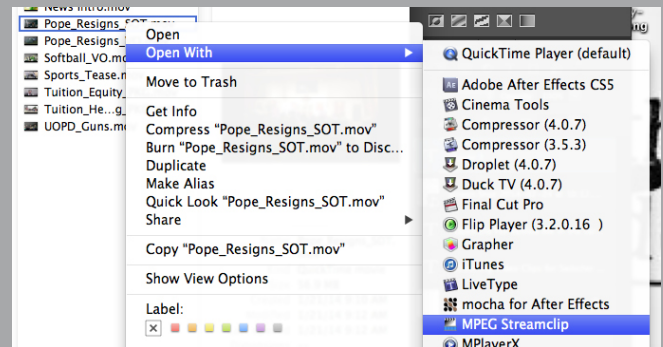
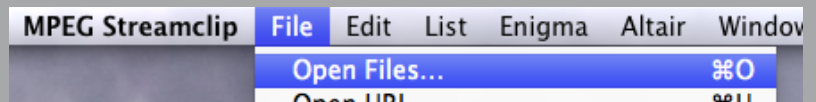


TWO

Open your clip.

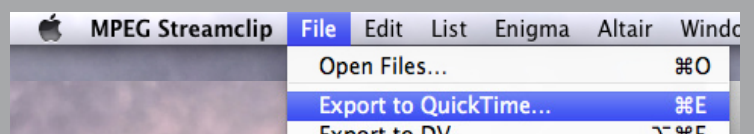
In MPEG Streamclip, select File > Open Files.

You can also open your clip in MPEG Streamclip by right clicking your video clip in the finder and selecting Open With MPEG Streamclip.



THREE

Export your video by clicking File > Export to Quicktime



UNIVERSITY OF
OREGON

School of Journalism
and Communication

FOUR

Set the settings.

Compression: **H.264**

Quality: Best

Sound: **Uncompressed**,
Stereo, **48 kHz**

Frame Size: 1920 x 1080

Frame Rate: **29.97 fps**

Interlaced Scaling

Click 'Make Movie' to finish
and save your clip

The screenshot shows the 'MPEG Streamclip - Movie Exporter' dialog box. The following settings are highlighted with red circles: 'Compression: H.264', 'Sound: Uncompressed', 'Stereo', '48 kHz', '1920 x 1080 (16:9)', and 'Interlaced Scaling'. The 'Frame Rate' is highlighted with a yellow circle and set to '29.97'. The 'Quality' is set to '100 %'. Other visible settings include 'Limit Data Rate' (unchecked), 'Multipass' (unchecked), 'B-Frames' (unchecked), 'Frame Size' (1920 x 1080 (16:9) selected), 'Frame Rate' (29.97 selected), 'Frame Blending' (unchecked), 'Better Downsampling' (unchecked), 'Desselect for progressive movies' (checked), 'Interlaced Scaling' (checked), 'Deinterlace Video' (unchecked), 'Field Dominance' (Upper Field First), 'Rotation' (No), 'Zoom' (100 % X/Y 1 Center 0, 0), 'Cropping' (unchecked), 'Presets...' button, 'Reset All' button, 'Adjustments...' button, 'Preview' button, 'Fast Start' (unchecked), 'Cancel' button, and 'Make Movie' button.

For more information, email support@jcomm.uoregon.edu, call 541-346-0257,
or visit the Tech Desk at Allen 319.